

**Honeywell**

# **Dolphin<sup>®</sup> 6100 移动数据终端**

---

随机系统 Windows CE<sup>®</sup> 5.0

**快速入门指南**

---

---

# Dolphin 6100 移动数据终端

## 快速入门指南

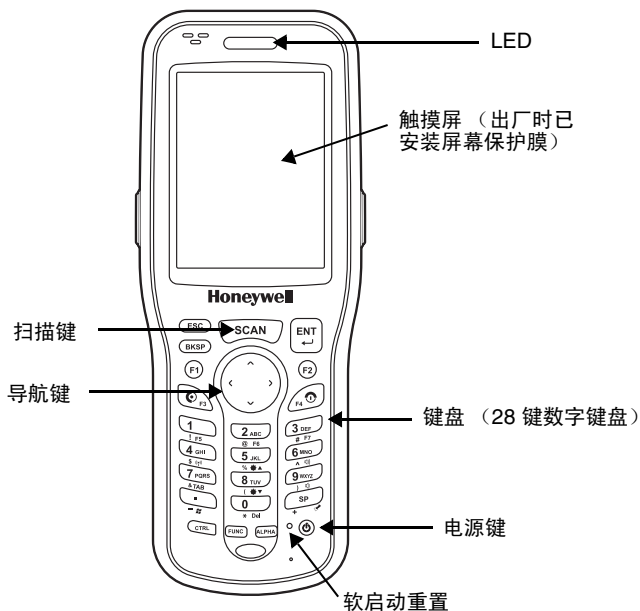
### 打开装箱

验证装箱中是否包含以下物品：

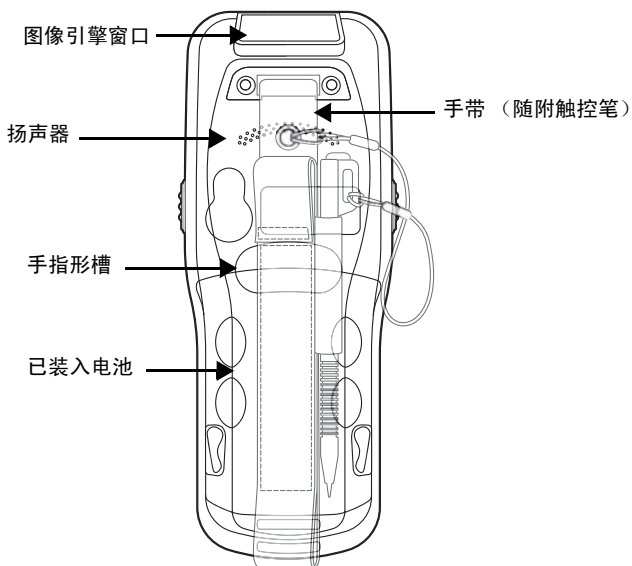
- Dolphin 6100 移动数据终端（终端机）
- 主电池组（7.4 v 锂离子电池）
- AC 交流主电源
- 当地适用的电源转换插头

注：请确保保管好原包装，以便在 Dolphin 终端需要返修时提供；有关详细信息，请参见第 6 页。

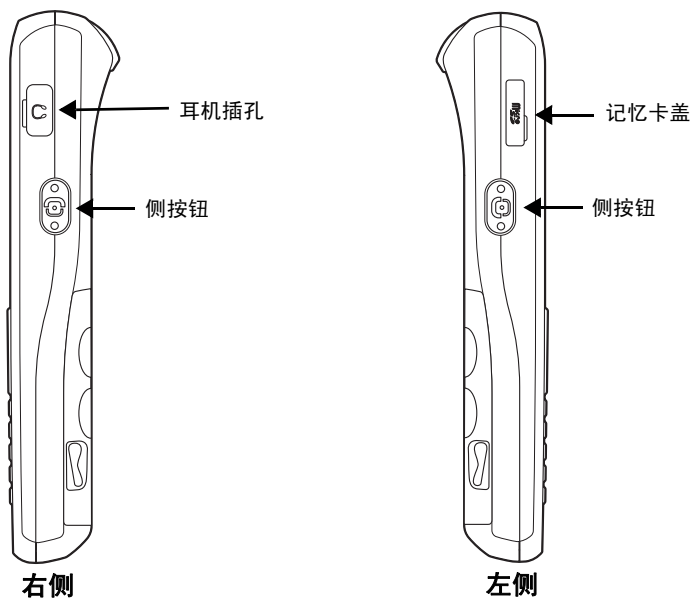
### Dolphin 6100 前面板



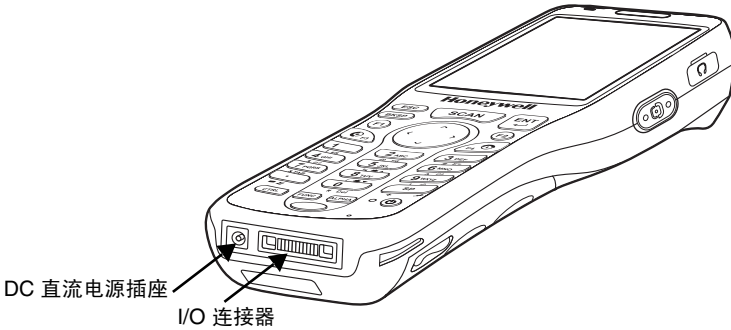
## Dolphin 6100 后面板



## Dolphin 6100 右侧面板和左侧面板

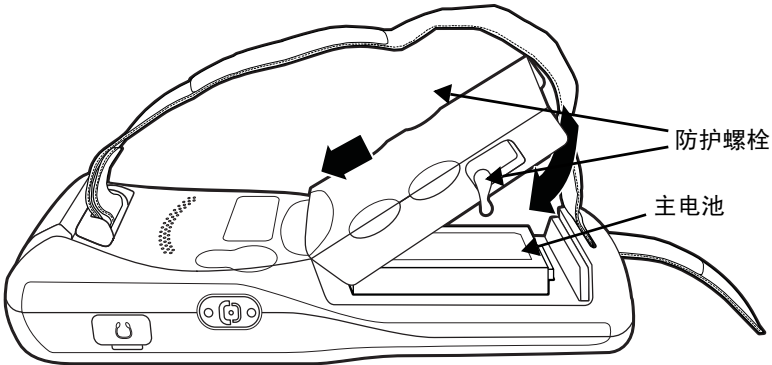


## Dolphin 6100 底部连接器



### 步骤 1: 安装主电池

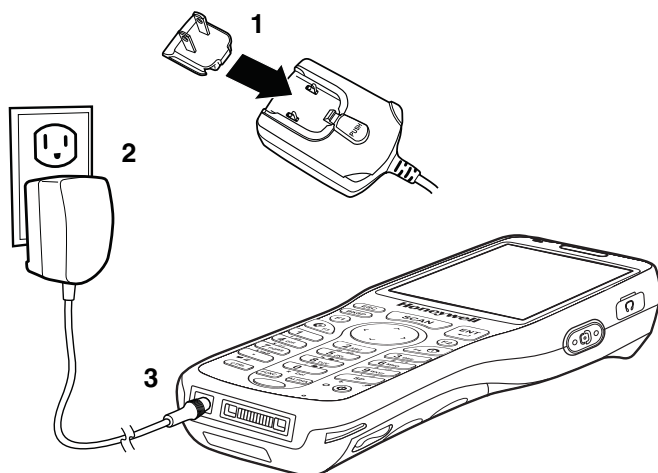
6100 移动数据终端产品随附了一个与设备分开包装的电池。要安装电池，松开手带，把螺栓向上转动拆下电池盖，将电池标签面朝上插入电池，然后放回电池盖。



建议您使用 Honeywell 锂离子电池组。使用任何非 Honeywell 电池可能导致超出保修范围的损坏。

## 步骤 2: 将电池充电

Dolphin 终端随附的主电池组和内部备用电池的电量均已充分释放（完全没电）。在第一次使用前，请使用 Dolphin 充电电缆给主电池组充电，取决于您的电池，充电时间至少为 4 或 6 个小时。



建议您使用 Honeywell 外围设备、电源线和电源适配器。使用任何非 Honeywell 外围设备、电源线或电源适配器可能导致超出保修范围的损坏。

## 步骤 3: 启动终端

终端一通电便开始启动并自动运行。不要按任何键或中断启动过程。启动过程完成后，“桌面”屏幕会出现且终端可供随时使用。

## 重置设备

软重置：用触控笔按下后放开 **Reset**（重置）按钮。这会重置 RAM 内存并重新加载操作系统。

硬重置：用触控笔按住 **Reset**（重置）按钮，然后按下后放开 **Power**（电源）。这会重置 RAM 内存、重新加载操作系统并重置“实时时钟”。

---

## 用户文档

请参阅《Dolphin 6100 User's Guide》（用户指南），可从 [www.honeywellaidc.com](http://www.honeywellaidc.com) 下载。

## Dolphin 6100 提供的外围设备和附件

**Dolphin HomeBase™ 设备**

**Dolphin QuadCharger™ 设备**

**Dolphin eBase 设备**

**Dolphin USB 通信电缆**

## 技术协助

如果您在进行安装或故障排除时需要协助，请致电您的经销商或最近的技术支持部门：

### 北美 / 加拿大

电话：(800) 782-4263

电子邮件：[hsmnasupport@honeywell.com](mailto:hsmnasupport@honeywell.com)

### 拉丁美洲

电话：(803) 835-8000

电话：(800) 782-4263

电子邮件：[hsmlasupport@honeywell.com](mailto:hsmlasupport@honeywell.com)

### 巴西

电话：+55 (21) 3535-9100

传真：+55 (21) 3535-9105

电子邮件：[brsuporte@honeywell.com](mailto:brsuporte@honeywell.com)

### 墨西哥

电话：(803) 835-8000

电子邮件：[hsmlasupport@honeywell.com](mailto:hsmlasupport@honeywell.com)

### 欧洲、中东和非洲

电话：+31 (0) 40 7999 393

传真：+31 (0) 40 2425 672

电子邮件：[hsmeurosupport@honeywell.com](mailto:hsmeurosupport@honeywell.com)

### 香港

电话：+852-29536436

传真：+851-2511-3557

电子邮件：[aptechsupport@honeywell.com](mailto:aptechsupport@honeywell.com)

---

## 新加坡

电话：+65-6842-7155

传真：+65-6842-7166

电子邮件：[aptechsupport@honeywell.com](mailto:aptechsupport@honeywell.com)

## 中国

电话：+86 800 828 2803

传真：+86-512-6762-2560

电子邮件：[aptechsupport@honeywell.com](mailto:aptechsupport@honeywell.com)

## 日本

电话：+81-3-3839-8511

传真：+81-3-3839-8519

电子邮件：[aptechsupport@honeywell.com](mailto:aptechsupport@honeywell.com)

## 在线技术协助

您也可以从 [www.honeywellaidc.com](http://www.honeywellaidc.com) 获取在线技术协助。

## 其他信息

若要下载这些产品的完整用户指南，请访问我们的网站  
[www.honeywellaidc.com](http://www.honeywellaidc.com)。

## 产品服务和维修

Honeywell International Inc. 通过全球各地的服务中心为其所有产品提供服务。若要获得保修或非保修服务，请将设备返还 Honeywell（邮资已付），并附上已注明日期的购买记录副本。请与下面的相应地址联络，以便在返还产品之前获取“返还材料授权号”(RMA #)。

### 北美

电话：(800) 782-4263

电子邮件：[hsmnaservice@honeywell.com](mailto:hsmnaservice@honeywell.com)

### 拉丁美洲

电话：(803) 835-8000

电话：(800) 782-4263

传真：(239) 263-9689

电子邮件：[laservice@honeywell.com](mailto:laservice@honeywell.com)

### 巴西

电话：+55 (21) 3535-9100

传真：+55 (21) 3535-9105

电子邮件：[brservice@honeywell.com](mailto:brservice@honeywell.com)



---

## 墨西哥

电话：+52 (55) 5203-2100

传真：+52 (55) 5531-3672

电子邮件：[mxservice@honeywell.com](mailto:mxservice@honeywell.com)

## 欧洲、中东和非洲

电话：+31 (0) 40 2901 633

传真：+31 (0) 40 2901 631

电子邮件：[euroservice@honeywell.com](mailto:euroservice@honeywell.com)

## 香港

电话：+852-29536436

传真：+851-2511-3557

电子邮件：[apservice@honeywell.com](mailto:apservice@honeywell.com)

## 新加坡

电话：+65-6842-7155

传真：+65-6842-7166

电子邮件：[apservice@honeywell.com](mailto:apservice@honeywell.com)

## 中国

电话：+86 800 828 2803

传真：+86-512-6762-2560

电子邮件：[apservice@honeywell.com](mailto:apservice@honeywell.com)

## 日本

电话：+813-3839-8511

传真：+813-3839-8519

电子邮件：[apservice@honeywell.com](mailto:apservice@honeywell.com)

## 在线产品服务和维修协助

您也可以从 [www.honeywellaidc.com](http://www.honeywellaidc.com) 获取在线产品服务和维修协助。

---

## **Limited Warranty**

Honeywell International Inc. ("HII") warrants its products and optional accessories to be free from defects in materials and workmanship and to conform to HII's published specifications applicable to the products purchased at the time of shipment. This warranty does not cover any HII product which is (i) improperly installed or used; (ii) damaged by accident or negligence, including failure to follow the proper maintenance, service, and cleaning schedule; or (iii) damaged as a result of (A) modification or alteration by the purchaser or other party, (B) excessive voltage or current supplied to or drawn from the interface connections, (C) static electricity or electro-static discharge, (D) operation under conditions beyond the specified operating parameters, or (E) repair or service of the product by anyone other than HII or its authorized representatives.

This warranty shall extend from the time of shipment for the duration published by HII for the product at the time of purchase ("Warranty Period"). Any defective product must be returned (at purchaser's expense) during the Warranty Period to HII factory or authorized service center for inspection. No product will be accepted by HII without a Return Materials Authorization, which may be obtained by contacting HII. In the event that the product is returned to HII or its authorized service center within the Warranty Period and HII determines to its satisfaction that the product is defective due to defects in materials or workmanship, HII, at its sole option, will either repair or replace the product without charge, except for return shipping to HII.

EXCEPT AS MAY BE OTHERWISE PROVIDED BY APPLICABLE LAW, THE FOREGOING WARRANTY IS IN LIEU OF ALL OTHER COVENANTS OR WARRANTIES, EITHER EXPRESSED OR IMPLIED, ORAL OR WRITTEN, INCLUDING, WITHOUT LIMITATION, ANY IMPLIED WARRANTIES OF MERCHANTABILITY OR FITNESS FOR A PARTICULAR PURPOSE, OR NON-INFRINGEMENT.

HII'S RESPONSIBILITY AND PURCHASER'S EXCLUSIVE REMEDY UNDER THIS WARRANTY IS LIMITED TO THE REPAIR OR REPLACEMENT OF THE DEFECTIVE PRODUCT WITH NEW OR REFURBISHED PARTS. IN NO EVENT SHALL HII BE LIABLE FOR INDIRECT, INCIDENTAL, OR CONSEQUENTIAL DAMAGES, AND, IN NO EVENT, SHALL ANY LIABILITY OF HII ARISING IN CONNECTION WITH ANY PRODUCT SOLD HEREUNDER (WHETHER SUCH LIABILITY ARISES FROM A CLAIM BASED ON CONTRACT, WARRANTY, TORT, OR OTHERWISE) EXCEED THE ACTUAL AMOUNT PAID TO HII FOR THE PRODUCT. THESE LIMITATIONS ON LIABILITY SHALL REMAIN IN FULL FORCE AND EFFECT EVEN WHEN HII MAY HAVE BEEN ADVISED OF THE POSSIBILITY OF SUCH INJURIES, LOSSES, OR DAMAGES. SOME STATES, PROVINCES, OR COUNTRIES DO NOT ALLOW THE EXCLUSION OR LIMITATIONS OF INCIDENTAL OR CONSEQUENTIAL DAMAGES, SO THE ABOVE LIMITATION OR EXCLUSION MAY NOT APPLY TO YOU.

All provisions of this Limited Warranty are separate and severable, which means that if any provision is held invalid and unenforceable, such determination shall not affect the validity of enforceability of the other provisions hereof. Use of any peripherals not provided by the manufacturer may result in damage not covered by this warranty. This includes but is not limited to: cables, power supplies, cradles, and docking stations. HII extends these warranties only to the first end-users of the products. These warranties are non-transferable.

---

The duration of the limited warranty for the Dolphin 6100 Series is as follows:

- The duration of the limited warranty for terminals with an integrated imager is one-year.
- The duration of the limited warranty for touch screens is one-year.
- The duration of the limited warranty for Dolphin HomeBase and QuadCharger devices is one-year.
- The duration of the limited warranty for batteries is one-year. Use of any battery from a source other than Honeywell may result in damage not covered by the warranty. Batteries returned to Honeywell International Inc. in a reduced state may or not be replaced under this warranty. Battery life will be greatly increased when following the battery instructions in the Dolphin 6100 Mobile Computer User's Guide.



---

## ***Disclaimer***

Honeywell International Inc. (“HII”) reserves the right to make changes in specifications and other information contained in this document without prior notice, and the reader should in all cases consult HII to determine whether any such changes have been made. The information in this publication does not represent a commitment on the part of HII.

HII shall not be liable for technical or editorial errors or omissions contained herein; nor for incidental or consequential damages resulting from the furnishing, performance, or use of this material.

This document contains proprietary information that is protected by copyright. All rights are reserved. No part of this document may be photocopied, reproduced, or translated into another language without the prior written consent of HII.

Web Address: [www.honeywellaidc.com](http://www.honeywellaidc.com)

## ***Trademarks***

Dolphin, Dolphin RF, HomeBase, Mobile Base, and QuadCharger are trademarks or registered trademarks of Hand Held Products, Inc. or Honeywell International Inc.

Microsoft, Windows, Windows Mobile, Windows CE, Windows NT, Windows 2000, Windows ME, Windows XP, ActiveSync, Outlook, and the Windows logo are trademarks or registered trademarks of Microsoft Corporation.

Other product names mentioned in this manual may be trademarks or registered trademarks of their respective companies and are the property of their respective owners.

## ***专利***

有关专利列表，请参阅产品包装。

©2009 Honeywell International Inc. 保留所有权利。

**Honeywell**

700 Visions Drive  
P.O. Box 208  
Skaneateles Falls, NY 13153-0208