

# YJ4600

---

Corded Area-Imaging Scanner

## Quick Start Guide



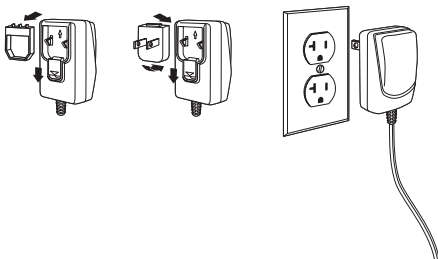
*Note: Refer to your user's guide for information about cleaning your device.*

For localized language versions of this document, go to [www.youjjeaidc.com](http://www.youjjeaidc.com).

## ***Getting Started***

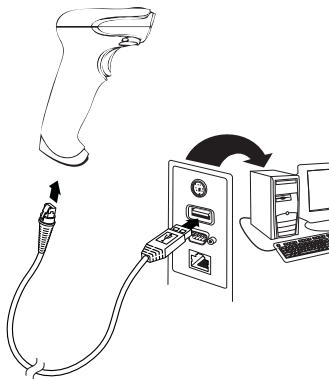
Turn off computer's power before connecting the scanner, then power up the computer once the scanner is fully connected.

## ***Power Supply Assembly (if included)***

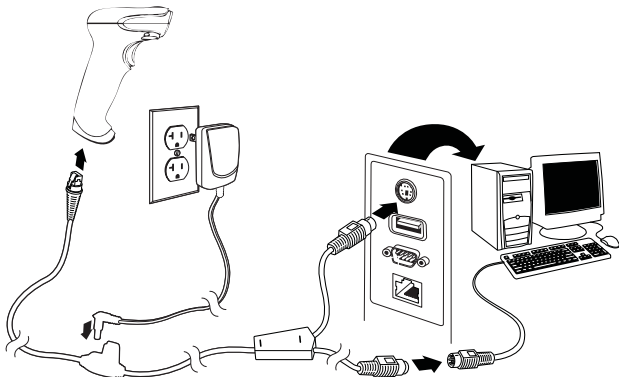


## ***Connecting the Scanner***

### ***USB:***



## ***Keyboard Wedge:***



## ***Reading Techniques***

The view finder projects an aiming beam that should be centered over the bar code, but it can be positioned in any direction for a good read.



Hold the scanner over the bar code, press the button, and center the aiming beam on the bar code.



The aiming beam is smaller when the scanner is closer to the code and larger when it is farther from the code. Hold the scanner close to smaller bar codes, and farther away from large bar codes to get a proper read.

If the bar code is highly reflective (e.g., laminated), you may need to tilt the scanner at an angle so the bar code can be scanned.

## Standard Product Defaults

The following bar code resets all standard product default settings.



Standard Product Defaults

## Keyboard Country

Scan the **Program Keyboard Country** bar code below, then scan the numeric bar code(s) from [page 11](#), then the **Save** bar code to program the keyboard for your country. As a general rule, the following characters are not supported by the scanner for countries other than the United States:

@ | \$ # { } [ ] = / ' \ < > ~



Program Keyboard Country

Country Code	Scan	Country Code	Scan
Brazil	16	Turkey F	27
Brazil (MS)	59	Turkey Q	24
Russian	26	Poland	20
Russian (MS)	67	Latin America	14
Russian (Typewriter)	68	USA (Default)	0



Save

*Note: For a complete list of country codes, see the User's Guide for your product at our website, [www.youjieaidc.com](http://www.youjieaidc.com).*

## ***Trigger***

The following bar codes will allow you to use the scanner in Manual Trigger - Normal Mode (need to press the button to read) or Presentation mode (the scanner is activated when it “sees” a bar code).



Manual Trigger - Normal  
(Default)



Presentation Mode

## ***Suffix***

If you want a carriage return after the bar code, scan the **Add CR Suffix bar code**. To add a tab after the bar code, scan the **Add Tab Suffix bar code**. Otherwise, scan the **Remove Suffix bar code** to remove the suffixes.



Add CR Suffix



Add Tab Suffix



Remove Suffix

## **Add Code ID Prefix to all Symbologies**

Scan the following bar code if you wish to add a Code ID prefix to all symbologies at once.



Add Code ID Prefix To All Symbologies  
(Temporary)

*Note: For a complete list of Code IDs, see the User's Guide for your product at our website, [www.youjjeaidc.com](http://www.youjjeaidc.com).*

## **Function Code Transmit**

When this selection is enabled and function codes are contained within the scanned data, the scanner transmits the function code to the terminal. Charts of these function codes are provided in your User's Guide. When the scanner is in keyboard wedge mode, the scan code is converted to a key code before it is transmitted.



Enable  
(Default)



Disable

## ***Programming the Interface***

Scan one of the following bar codes to program your interface.



Keyboard Wedge  
IBM PC AT and Compatibles with  
CR suffix



USB IBM SurePos  
(USB Handheld Scanner)  
Interface



USB IBM SurePos  
(USB Tabletop Scanner)  
Interface



USB Keyboard (PC)



USB Keyboard (Mac)



USB Japanese Keyboard (PC)



USB HID Bar Code Scanner



## ***Mobile Phone Read Mode***

When this mode is selected, your scanner is optimized to read bar codes from mobile phone or other LED displays. However, the speed of scanning printed bar codes may be slightly lower when this mode is enabled.



Hand Held Scanning - Mobile  
Phone



Presentation Scanning - Mobile  
Phone

***Note: To turn off Mobile Phone Read Mode, scan the Manual Trigger - Normal bar code on the previous page.***

## ***Data Format Editor Instructions***

The following are abbreviated instructions for entering a data format. For complete instructions refer to your User's Guide, available at our website, [www.youjjeaidc.com](http://www.youjjeaidc.com).

1. Scan the **Enter Data Format** symbol.
2. Primary/Alternate Format: scan **0** for Primary Format
3. Terminal Type: scan **099** for any terminal type
4. Code I.D.: scan **99** for any bar code type
5. Length: scan **9999** for any length bar code.
6. Editor commands: use the Programming Chart that follows.
7. Scan **Save** to save your entries.



Enter Data Format



Clear All Data Formats



Save

# *Programming Chart*



1



3



5



7



0



2



4



6



8



A



C



E



Save



9



B



D



F

## ***Technical Assistance***

Contact information for technical support, product service, and repair can be found at [www.youjieaidc.com](http://www.youjieaidc.com).

## ***User Documentation***

For localized versions of this document, and to download the User's Guide, go to [www.youjieaidc.com](http://www.youjieaidc.com).

## ***Disclaimer***

Youjie reserves the right to make changes in specifications and other information contained in this document without prior notice, and the reader should in all cases consult Youjie to determine whether any such changes have been made. The information in this publication does not represent a commitment on the part of Youjie.

Youjie shall not be liable for technical or editorial errors or omissions contained herein; nor for incidental or consequential damages resulting from the furnishing, performance, or use of this material.

This document contains proprietary information that is protected by copyright. All rights are reserved. No part of this document may be photocopied, reproduced, or translated into another language without the prior written consent of Youjie.

Copyright 2012. All rights reserved.

Web Address: [www.youjieaidc.com](http://www.youjieaidc.com)

## ***Limited Warranty***

Youjie warrants its products to be free from defects in materials and workmanship and to conform to Youjie's published specifications applicable to the products purchased at the time of shipment. This warranty does not cover any Youjie product which is (i) improperly installed or used; (ii) damaged by accident or negligence, including failure to follow the proper maintenance, service, and cleaning schedule; or (iii) damaged as a result of (A) modification or alteration by the purchaser or other party, (B) excessive voltage or current supplied to or drawn from the interface connections, (C) static electricity or electro-static discharge, (D) operation under conditions

beyond the specified operating parameters, or (E) repair or service of the product by anyone other than Youjie or its authorized representatives.

This warranty shall extend from the time of shipment for the duration published by Youjie for the product at the time of purchase ("Warranty Period"). Any defective product must be returned (at purchaser's expense) during the Warranty Period to Youjie factory or authorized service center for inspection. No product will be accepted by Youjie without a Return Materials Authorization, which may be obtained by contacting Youjie. In the event that the product is returned to Youjie or its authorized service center within the Warranty Period and Youjie determines to its satisfaction that the product is defective due to defects in materials or workmanship, Youjie, at its sole option, will either repair or replace the product without charge, except for return shipping to Youjie.

EXCEPT AS MAY BE OTHERWISE PROVIDED BY APPLICABLE LAW, THE FOREGOING WARRANTY IS IN LIEU OF ALL OTHER COVENANTS OR WARRANTIES, EITHER EXPRESSED OR IMPLIED, ORAL OR WRITTEN, INCLUDING, WITHOUT LIMITATION, ANY IMPLIED WARRANTIES OF MERCHANTABILITY OR FITNESS FOR A PARTICULAR PURPOSE, OR NON-INFRINGEMENT.

YOUJIE'S RESPONSIBILITY AND PURCHASER'S EXCLUSIVE REMEDY UNDER THIS WARRANTY IS LIMITED TO THE REPAIR OR REPLACEMENT OF THE DEFECTIVE PRODUCT WITH NEW OR REFURBISHED PARTS. IN NO EVENT SHALL YOUJIE BE LIABLE FOR INDIRECT, INCIDENTAL, OR CONSEQUENTIAL DAMAGES, AND, IN NO EVENT, SHALL ANY LIABILITY OF YOUJIE ARISING IN CONNECTION WITH ANY PRODUCT SOLD HEREUNDER (WHETHER SUCH LIABILITY ARISES FROM A CLAIM BASED ON CONTRACT, WARRANTY, TORT, OR OTHERWISE) EXCEED THE ACTUAL AMOUNT PAID TO YOUJIE FOR THE PRODUCT. THESE LIMITATIONS ON LIABILITY SHALL REMAIN IN FULL FORCE AND EFFECT EVEN WHEN YOUJIE MAY HAVE BEEN ADVISED OF THE POSSIBILITY OF SUCH INJURIES, LOSSES, OR DAMAGES. SOME STATES, PROVINCES, OR COUNTRIES DO NOT ALLOW THE EXCLUSION OR

LIMITATIONS OF INCIDENTAL OR CONSEQUENTIAL DAMAGES, SO THE ABOVE LIMITATION OR EXCLUSION MAY NOT APPLY TO YOU.

All provisions of this Limited Warranty are separate and severable, which means that if any provision is held invalid and unenforceable, such determination shall not affect the validity of enforceability of the other provisions hereof. Use of any peripherals not provided by the manufacturer may result in damage not covered by this warranty. This includes but is not limited to: cables, power supplies, cradles, and docking stations. Youjie extends these warranties only to the first end-users of the products. These warranties are non-transferable.

The duration of the limited warranty for the Youjie 4600 scanner is ninety (90) days.

